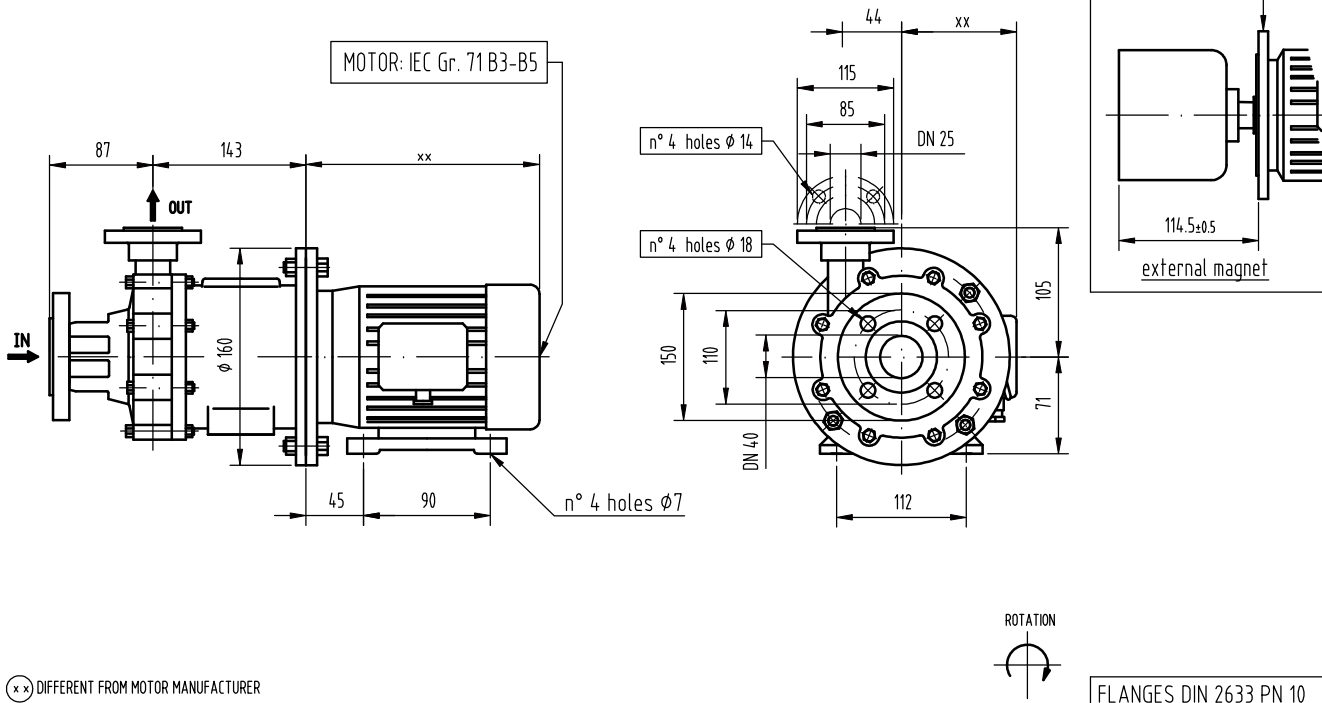


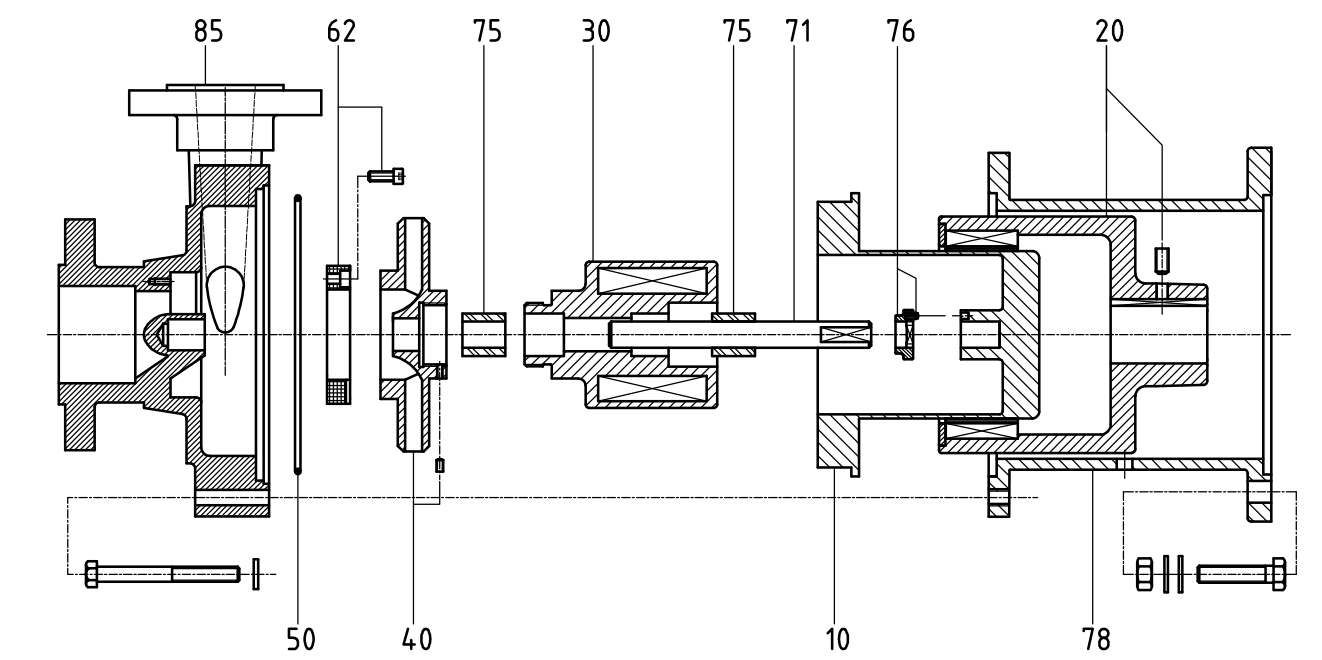
dimensions in mm



(xx) DIFFERENT FROM MOTOR MANUFACTURER

FLANGES DIN 2633 PN 10

REF	DESCRIPTION	MATERIAL	CODE
10	Containment shell	SS316	GPM10.110 S6
20	Ext. Magnet	CoSm/ Carbon Steel	GPM10.120 03
30	Int. Magnet	SS316/CoSm	GPM10.130 S6
40	Impeller	SS316	GPM10.140 S6
50	O-Ring 4450 (246)	VITON	GPM10.150 V
62	Casing Thrust Brg	GRAPHITE	GPM10.162 3
71	Shaft	SS316	GPM10.171 05
75	Bearings	GRAPHITE	GPM10.175 3
76	Ring	SS316	GPM10.176 S6
78	Bracket (160-110-14)	Cast Iron	GPM10.178 N1 03
85	Pump Casing	SS316	GPM10.185 S6 11
88	Rear Wet End (10+30+40+50+71+75+76)	/	GPM10.188 S6 R 00 3 3 05 V N N 0 0 0 0 N
90	Wet End (10+30+40+50+62+71+75+76+85)	/	GPM10.190 S6 W 11 3 3 05 V N N 0 0 0 0 N



Rev.	Date	Description	Drn.	Chk'd	Appr.

REVISIONS

	CLIENT
	P.O. N°
	ORD
	ITEM
MODEL	GPM 10.1 SS316 FL DIN PN10
CODE/DWG	GPM10.1 S6 C 11 3 3 05 V N N 1 03 3 N

Template N° 0D001